

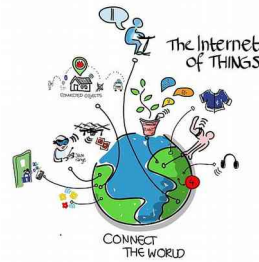
AMC™

SINCE 1970
Partnership JIT SoD
IoT IA

Date: 2014-11-17
Ref: TB-40110_2014-12-12_AMC WM100C-11_A

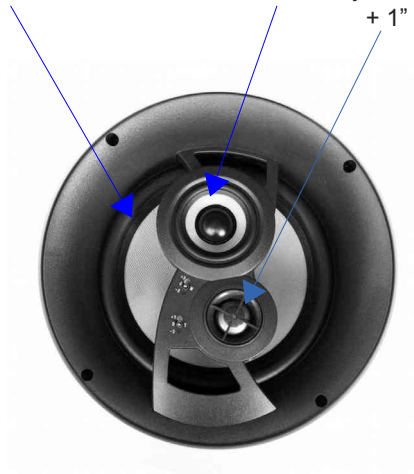
Technical Bulletin - AMC WM100C-11

- IoT IA **3 Way Ceiling Speaker** – 8" Glass Fiber Woofer + 2" Neodymium Glass-Fiber Mid-range
+ 1" Neodymium Titanium Tweeter



Technical Bulletin – AMC WM100C-11

IoT IA **3 Way Ceiling Speaker** – 8" Glass Fiber Woofer + 2" Neodymium Glass-Fiber Mid-range
+ 1" Neodymium Titanium Tweeter



1. 3-Way Drivers for Superb Hi-Fi Sound quality.
2. Fiber Glass Cones for Ultra Low Distortion using the perfect piston effects designs.
3. Neodymium magnet for high magnet flux density with Titanium Tweeter for Low TIM Clear Transparent High Frequency using natural characteristics of Titanium.
4. Designed with paint cover to be able to be painted to colors matching each ceiling or wall.

AMC™

SINCE 1970
Partnership JIT SoD
IoT IA

Date: 2014-11-17
Ref: TB-40110_2014-12-12_AMC WM100C-11_A

技術通報

- AMC WM100C-11

- 物聯網 (IoT)智慧建築(IA) **三音路 吸頂喇叭** – 8吋 玻璃纖維低音喇叭 + 2吋 釹-玻璃纖維中音喇叭
+ 1吋 釹-鈦高音喇叭



技術通報 – AMC WM100C-11

AMC 物聯網 (IoT)智慧建築(IA) **三音路 吸頂喇叭** – 8吋 玻璃纖維低音喇叭 + 2吋 釹-玻璃纖維中音喇叭
+ 1吋 釹-鈦高音喇叭



1. 三音路 三支高, 中, 低頻 AMC 獨特設計單體 配合分頻網路 以提供超高 Hi-Fi 音質.
2. 玻璃纖維音錐以完美的活塞設計提供超低失真的原音.
3. 釹 稀有金屬 提供超高磁通量與鈦合金設計成之高音單體 提供了超低 暫態交叉失真 (TIM) 以提供透明清晰高傳真的高音.
4. 貼切的覆蓋設計以便室內設計師可噴成不同顏色以配合天花板或牆壁的顏色.

<http://www.amchome.com>